

Like us on Facebook:

www.facebook.com/sxmweather

Meteorological Department St. Maarten

www.meteosxm.com

Follow us on twitter:

@sxmweather

Weather & Climate

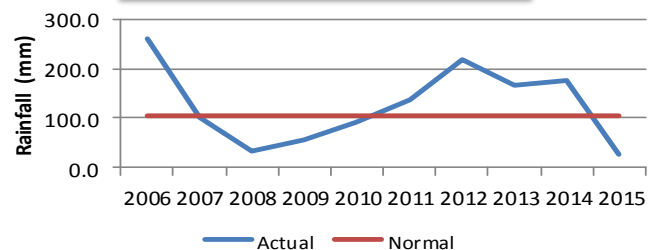
Volume 2, Issue 26

May 2016

NORMAL MAY CONDITIONS

Rainfall Total	56.4 mm – 115.2 mm	2– 5 in.
Avg. No. of Rain days	10 days	
Daily Average Temperature	27.5°C	82°F
Avg. Max. Temperature	30.7°C	87 °F
Avg. Min. Temperature	25.2°C	77°F
Avg. Daily Hours of Sunshine	8 hrs	

Actual Vs Normal May Rainfall



Drought Concerns remain in the ABC Islands.

Rainfall for the month of May has been below-normal for 5 out of the last 10 years.

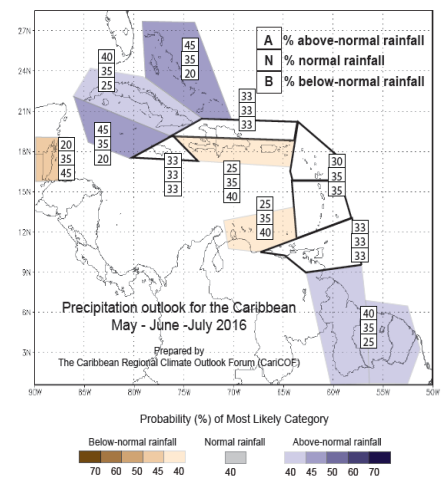
Seasonal Outlook for May to July (MJJ) 2016

According to the Caribbean Outlook Forum : <http://rcc.cimh.edu.bb/long-range-forecasts/caricof-climate-outlooks/>

Rainfall for most of the islands in the Eastern Caribbean is predicted to be near normal for the season; 'May—Jul. 2016'. Normal rainfall for St. Maarten ranges from 194.1 mm –281.1 mm/ 8-11in.

May is considered a transition month, this mean it can either be very dry or very wet. June usually has more frequent showers and July begins the wet season but often includes a mid –summer dry spell.

Temperature for most of the Caribbean is forecast to be normal to above-normal and become increasingly uncomfortable.

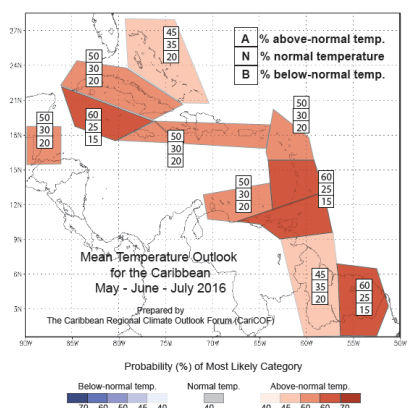


During mid-April, sea surface temperature anomalies across the Pacific Ocean continued to weaken and now indicates only a moderate El Nino strength.

Forecasts continue to indicate that El Nino will continue to weaken during the next couple months and a neutral phase to begin by the end of June, followed by a La Nina towards the Sept-Oct-Nov. season.

This could mean an early start of the rainfall season for the Caribbean and also a more active end of the 2016 hurricane season.

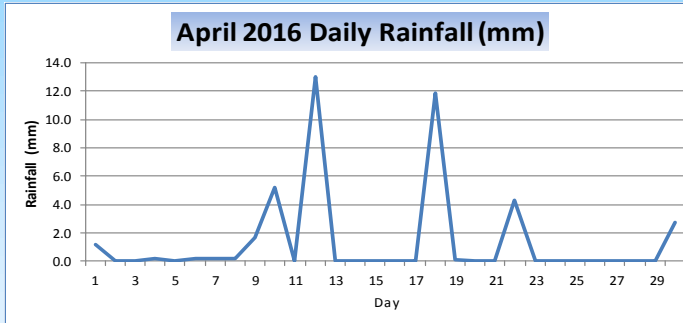
El Niño often hinders the development of rainfall and thunderstorm activity in the eastern Caribbean while La Nina causes an opposite effect.



Please note that all data was recorded at the Princess Juliana International Airport and may not necessarily reflect conditions at other points on country St Maarten.

APRIL 2016 IN REVIEW

Rainfall for the month of April was below the normal range. A total of 40.9 mm/1.6 inches were recorded. There were two days with heavy rainfall due to instability and increased moisture across the area. The longest dry spell was about seven days. Rainfall for the year so far remains below the normal range but above what was recorded in 2015.



The longest
dry spell was
7 days.

Rainfall from Jan. to Apr.

Normal	215-265 mm
2015	106.4 mm
2016	166.8 mm

Total Rainfall	40.9 mm	1.6 in.
2016 Cumulative Rainfall	166.8 mm	6.6 in.
Max. 24-Hr. Rainfall	April 12th	13.0 mm/ 0.5 in.
No. Rain Days (≥1.0 mm)	11 days	
No. Heavy Rain Days (≥10.0 mm)	2 days	
No. Thunderstorm Days	0 days	
Avg. Wind Speed	8 kts.	9 mph
Max. Wind Gust	April 21st	26 kts. / 30 mph
Avg. Temperature	27.0 °C	81 °F
Max. Temperature	April 24th	30.4 °C / 87 °F
Min. Temperature	April 19th	22.9°C / 73 °F

The normal rainfall for April ranges from 43.1 - 74.9 mm / 2-3 in.

The temperatures recorded during the month of April varied from below-normal to above normal.

The warmest day was the 27th with an average temperature of 28.1°C/83°F.

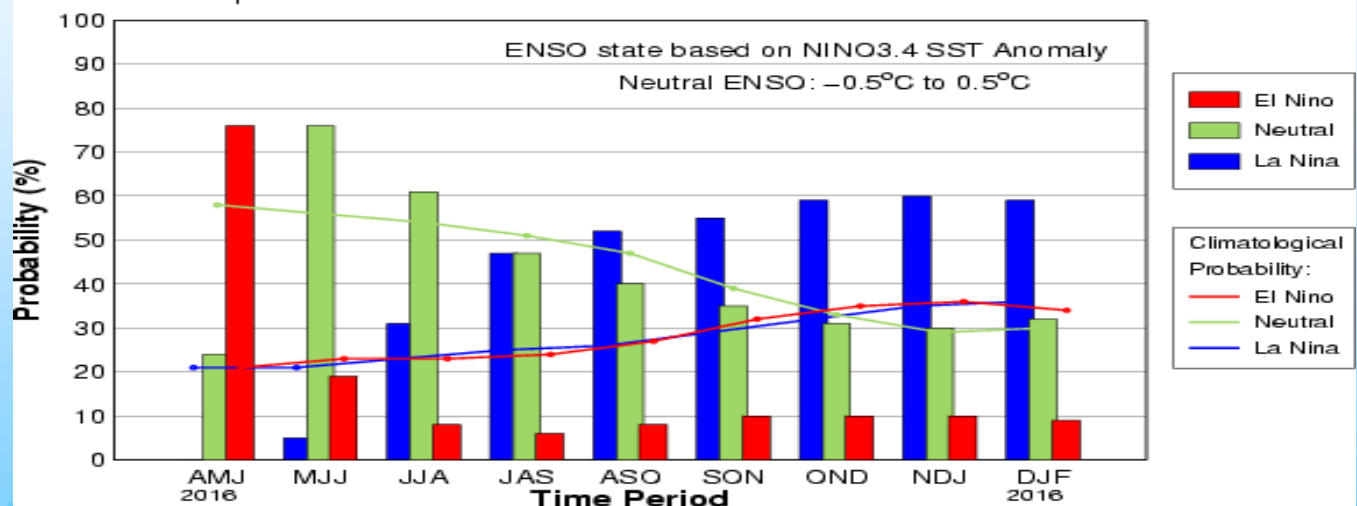
The day with the most sunshine hours was the 16th (12hrs :24 min).

The day with the least sunshine hours was the 30th (0 hr: 06 min)

The windiest day was the 21st, with a daily average wind speed of 12 kts. / 14 mph.

Skies were mostly Cloudy during the month of April.

Mid-Apr IR/CPC Model-Based Probabilistic ENSO Forecast



This newsletter is produced by the Meteorological Department of St. Maarten. We would appreciate your comments and feedback. Kindly drop us a line at meteo@sintmaartengov.org, fax at (1 721) 545 2998 or call us at (1 721) 545 2024/ 545 4226.