

Meteorological Department St. Maarten

Like us on Facebook:

www.facebook.com/sxmweather

www.meteosxm.com

Follow us on twitter:

@sxmweather

Weather & Climate

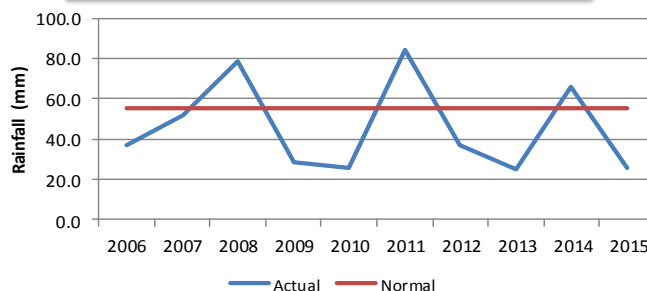
Volume 2, Issue 23

February 2016

NORMAL FEBRUARY CONDITIONS

Rainfall Total	31.2 mm – 57.0 mm	1– 2 in.
Avg. No. of Rain days	10 days	
Daily Average Temperature	25.4°C	78°F
Avg. Max. Temperature	28.8°C	84 °F
Avg. Min. Temperature	23.1°C	74°F
Avg. Daily Hours of Sunshine	9 hrs	

Actual Vs Normal February Rainfall



Rainfall for the month of February has been below-normal for 7 out of the last 10 years.

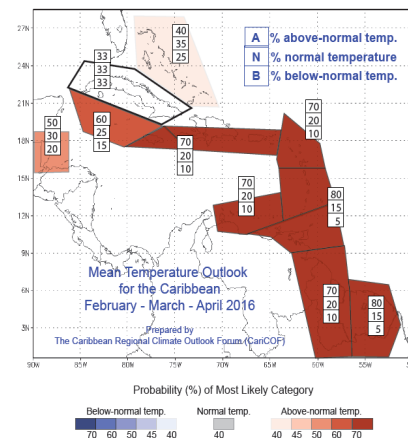
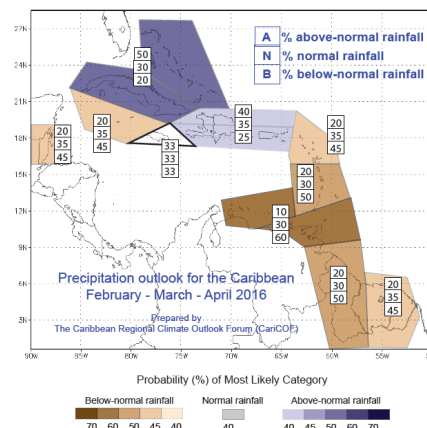
Drought conditions are forecasted for most of the islands by May 2016

Seasonal Outlook for January to March (JFM)2016

According to the Caribbean Outlook Forum : <http://rcc.cimh.edu.bb/long-range-forecasts/caricof-climate-outlooks/>

Precipitation is expected to be below-normal to near-normal for the season 'Feb–Apr 2016'. Normal rainfall for this season ranges between 148.1 mm –178.9 mm/ 6-7in. This season, rainfall is most likely to be below-normal with fewer wet days and wet spells than usual.

Temperature for most of the Caribbean is forecast to be above-normal for the same period.



El Niño conditions are ongoing, above normal sea surface temperatures continue across the Pacific Ocean. This El Niño is forecast to begin to weaken by the end of this season and then transition into the neutral phase by the May-Jun-Jul season.

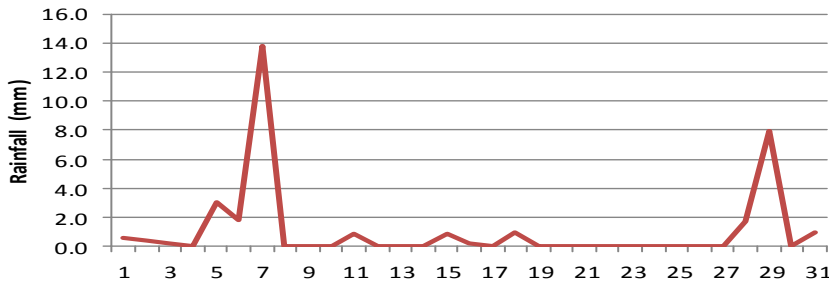
During the dry season, El Niño often weakens the development of rain and thunderstorm formation in the eastern and southern Caribbean, but enhances it in the north and west.

Most islands are now in long-term drought while others are in short-term drought. The ABC islands, Barbados, the Windward Islands and Trinidad & Tobago are expected to be worst affected by the end of May 2016.

Please note that all data was recorded at the Princess Juliana International Airport and may not necessarily reflect conditions at other points on country St Maarten.

Rainfall for the month of January was below the normal range. A total of 33.4 mm/1.3 inches was recorded, this was approximately 48% of the normal. The Caribbean Drought Monitoring Network is continuing its drought warning for the Leeward Islands and the southern Caribbean until the end of May 2016.

January 2016 Daily Rainfall (mm)



The longest dry spell was 10 days.

Total Rainfall	33.4 mm	1.3 in.
2016 Cumulative Rainfall	33.4 mm	1.3 in.
Max. 24-Hr. Rainfall	January 7 th	13.8 mm/ 0.5 in.
No. Rain Days (>=1.0 mm)	7 days	
No. Heavy Rain Days (>=10.0 mm)	1 day	
No. Thunderstorm Days	0 days	
Avg. Wind Speed	8 kts.	9 mph
Max. Wind Gust	January 30 th	30 kts. / 35 mph
Avg. Temperature	26.2 °C	79 °F
Max. Temperature	January 18 th & 25 th	29.3 °C / 85 °F
Min. Temperature	January 30 th	22.5°C / 73 °F

The normal rainfall for January ranges from 60.3 - 85.0 mm /2-3 in.

The temperatures recorded during the month of January varied from normal to above normal.

The warmest days were the 4th & 26th with an average temperature of 26.7°C/80°F.

The day with the most sunshine hours was the 18th & 19th (10hrs :36 min).

The day with the least sunshine hours was the 16th (2 hr: 48min)

The windiest day was the 23rd, with a daily average wind speed of 13 kts. / 14 mph.

Skies were mostly fair during the month of January.

Hurricane Alex formed in January 2016

- ◆ A tropical cyclone in the Atlantic in the month of January is rare. It has happened in the past and reminds us that cyclones can form outside of the June 1st to November 30th season.
- ◆ Tropical storm Alex formed on January 13th making it the first tropical storm to form in the month of January since 1978 in the Atlantic.
- ◆ On January 14th Alex became the first hurricane to form in the Atlantic in the month of January since in 1950.

Dates	Atlantic Cyclones
Jan 3-6 1938	Cat. 1 Hurricane
Jan. 4-9 1951	Tropical Storm
Jan 27-28 1954	Tropical Depression
Dec 30 1954- Jan 6 1955	Cat. 1 Hurricane Alice
Jan. 18-23 1978	Sub-tropical Storm
Jan. 13-15 2016	Cat. 1 Hurricane Alex